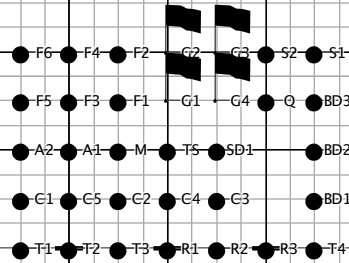


2016 SABRE Marching Band
 Pregame Drill

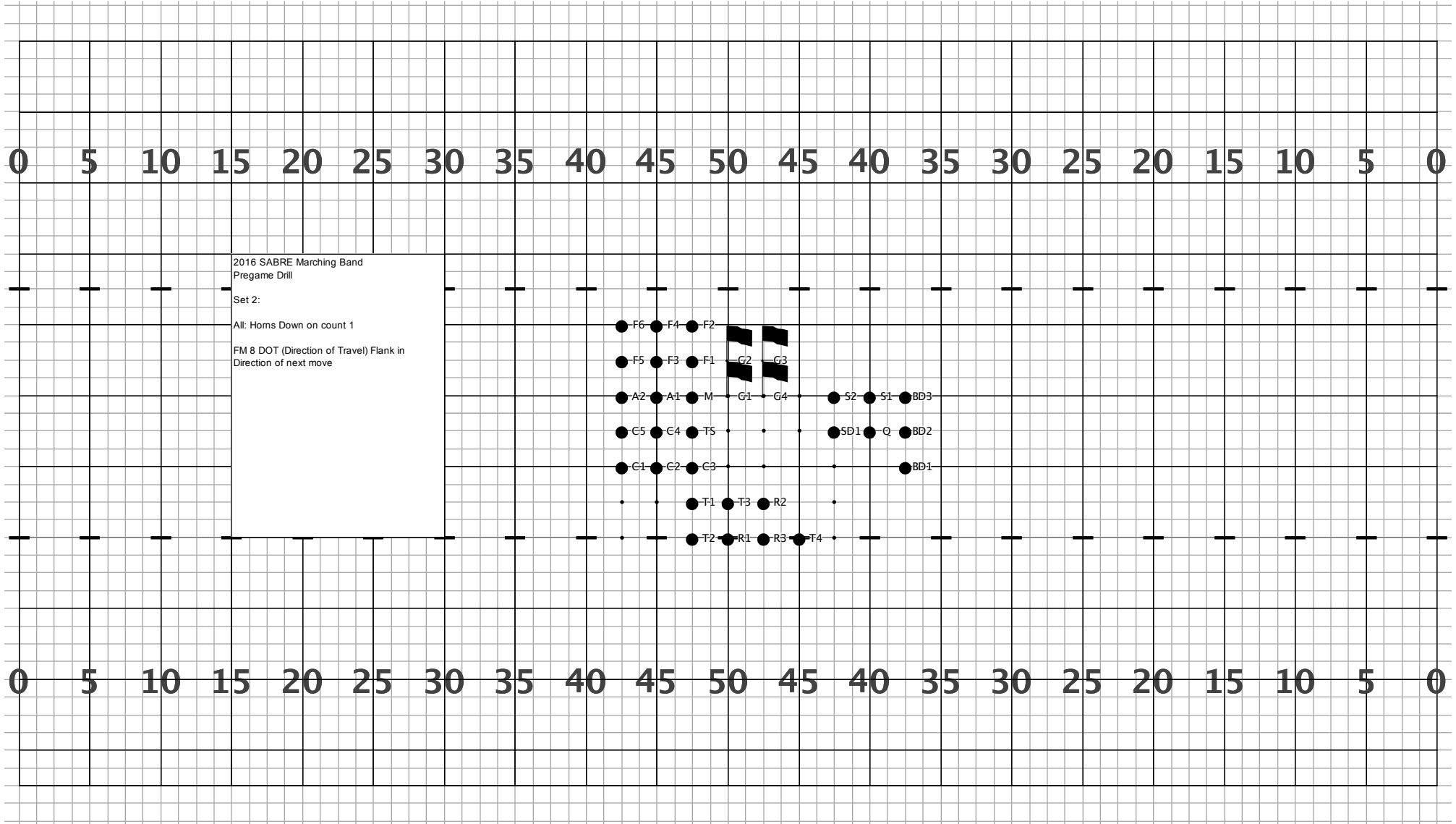
Written By:
 Zachary Geller

STARTING FORMATION

Set 1:
 All HOLD through SSB

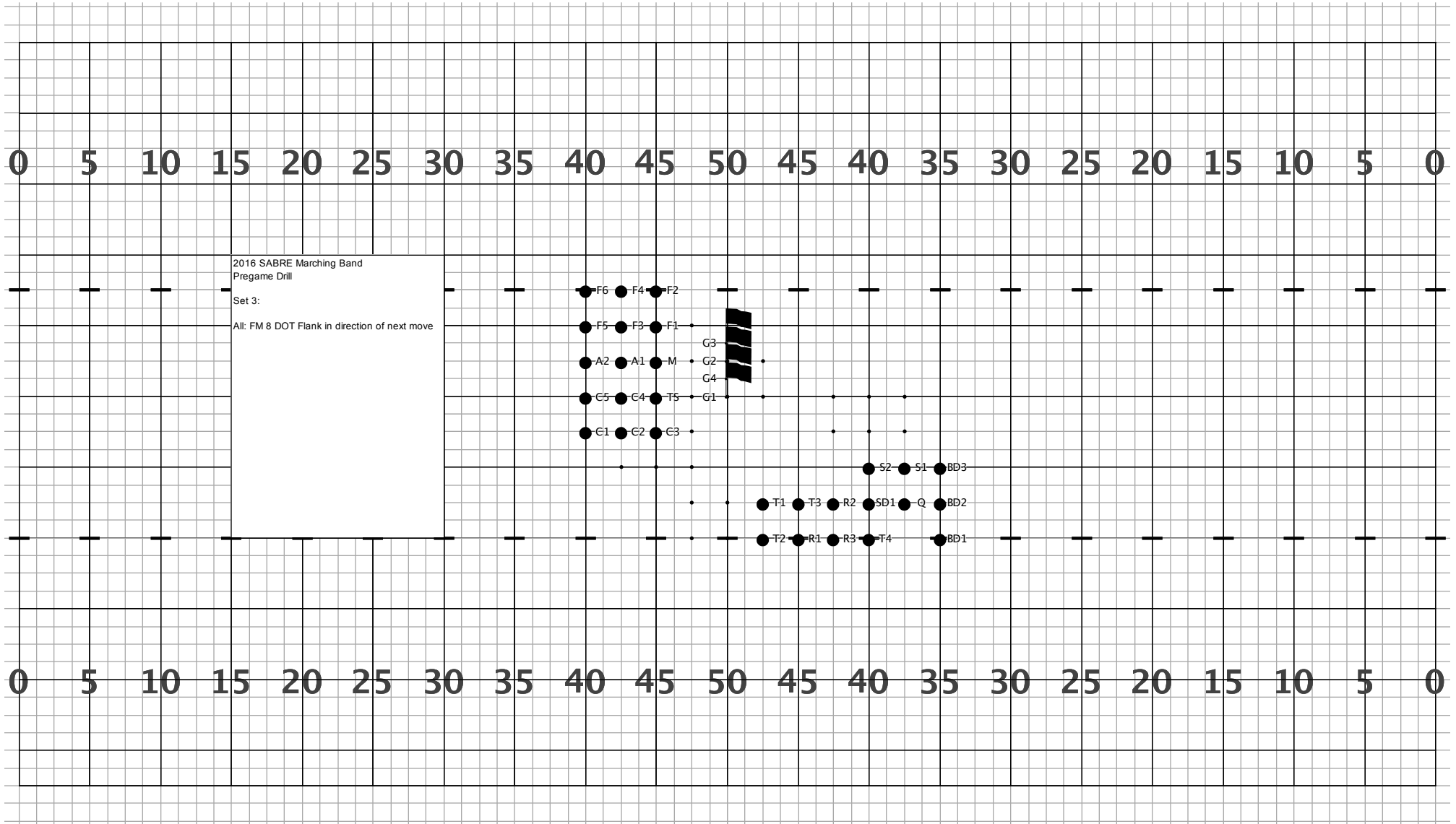


Director Viewpoint

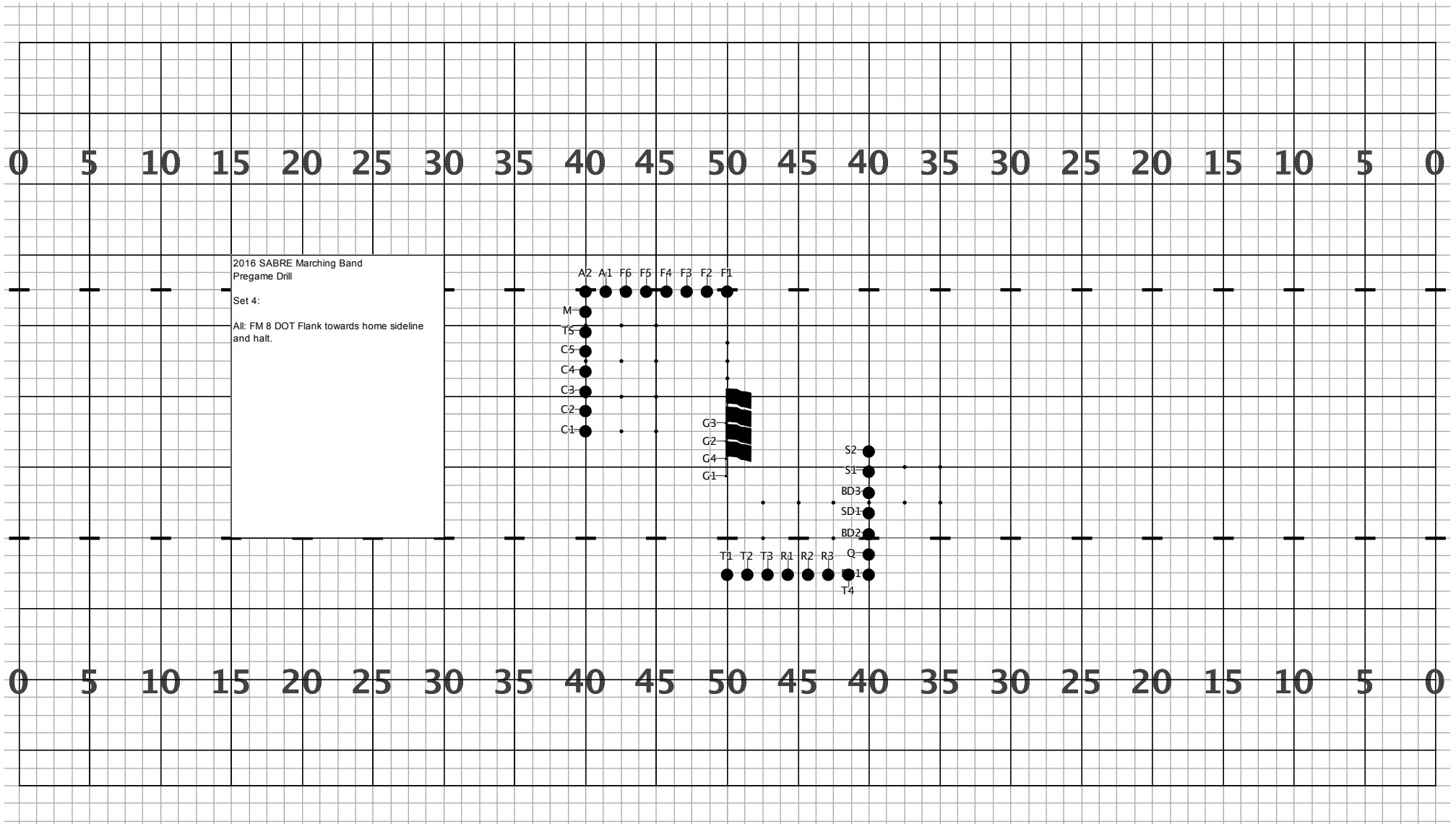


2016 SABRE Marching Band
Pregame Drill
Set 2:
All: Horns Down on count 1
FM 8 DOT (Direction of Travel) Flank in
Direction of next move

Director Viewpoint



Director Viewpoint

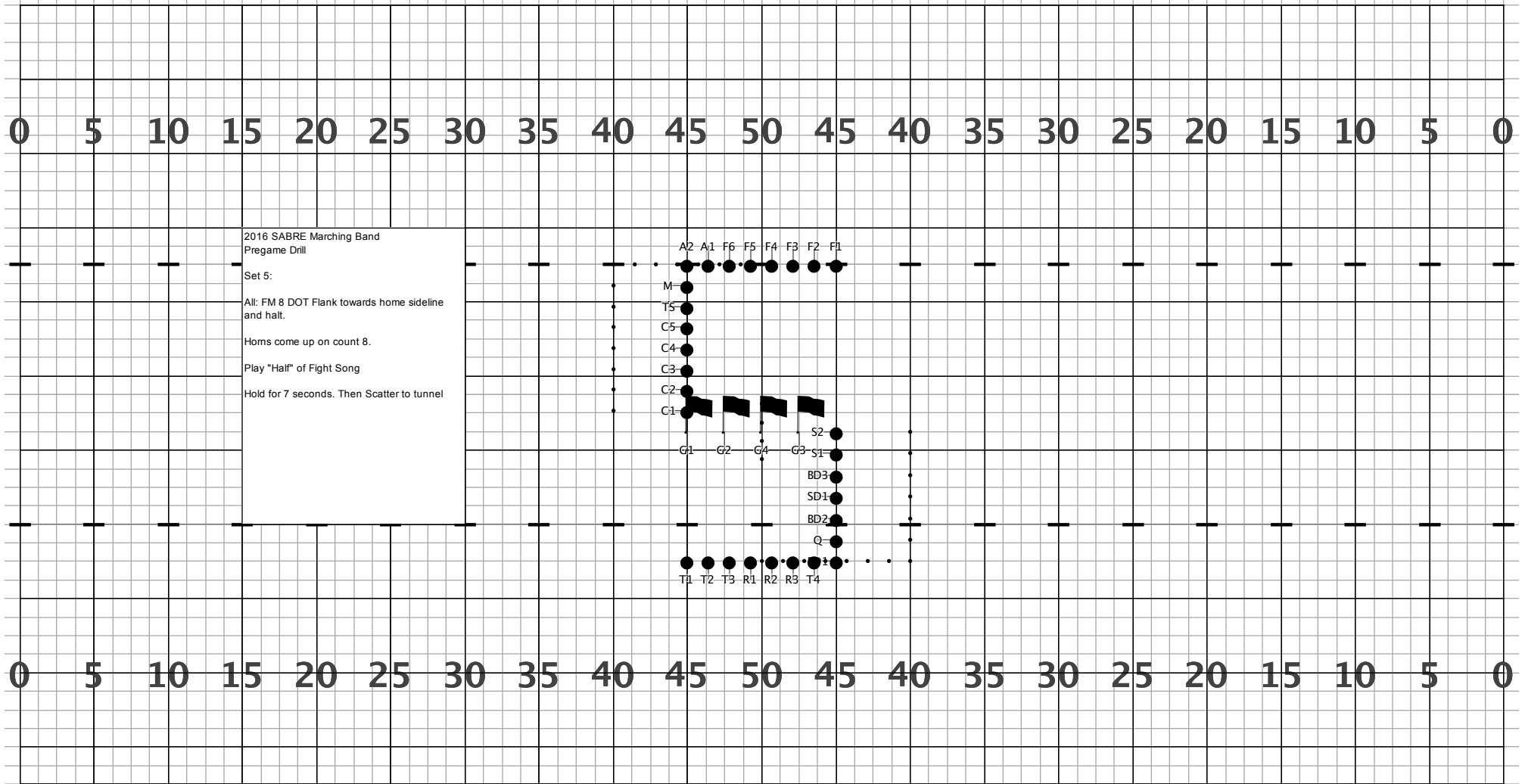


2016 SABRE Marching Band
Pregame Drill

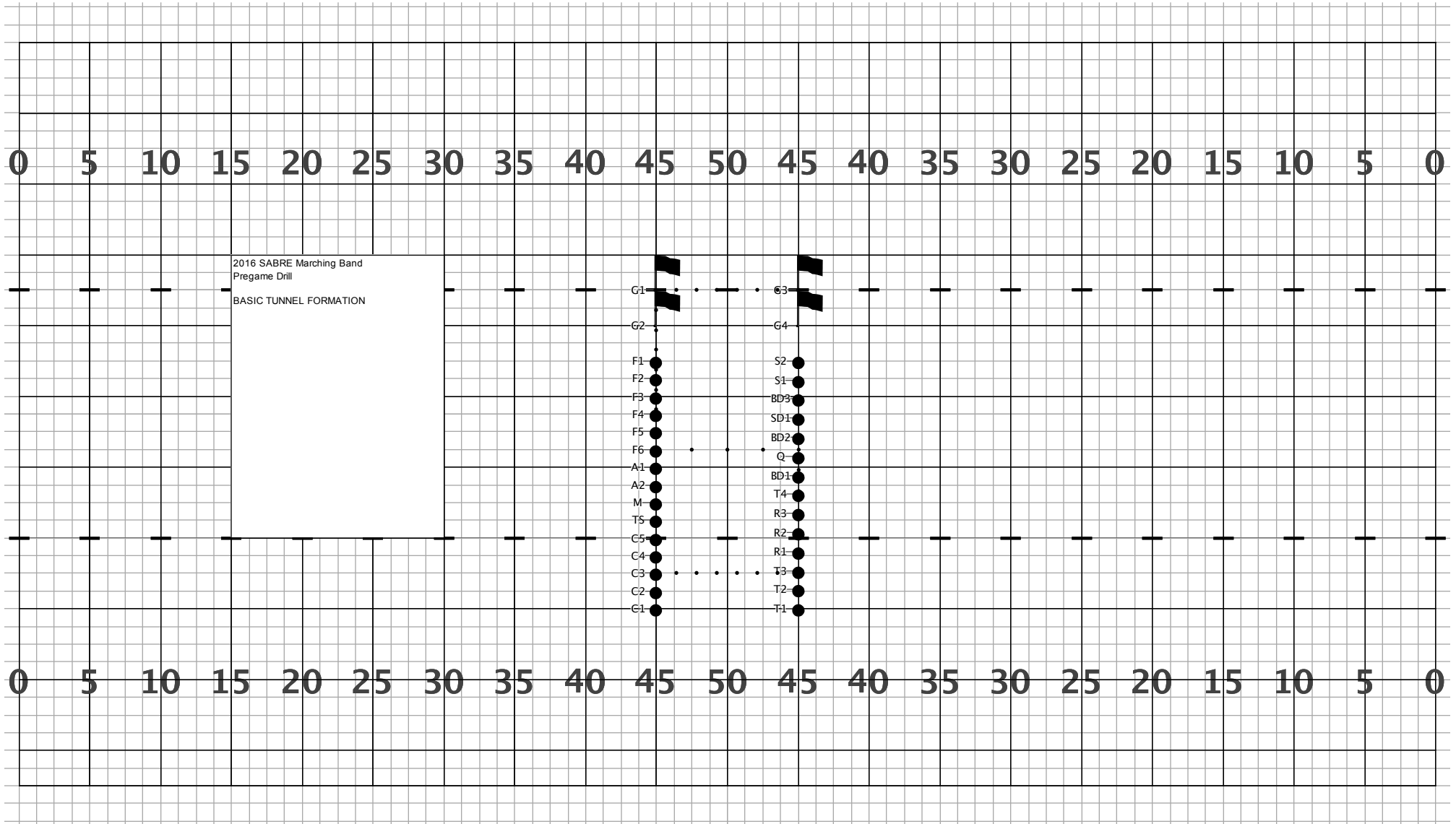
Set 4:

All: FM 8 DOT Flank towards home sideline
and halt.

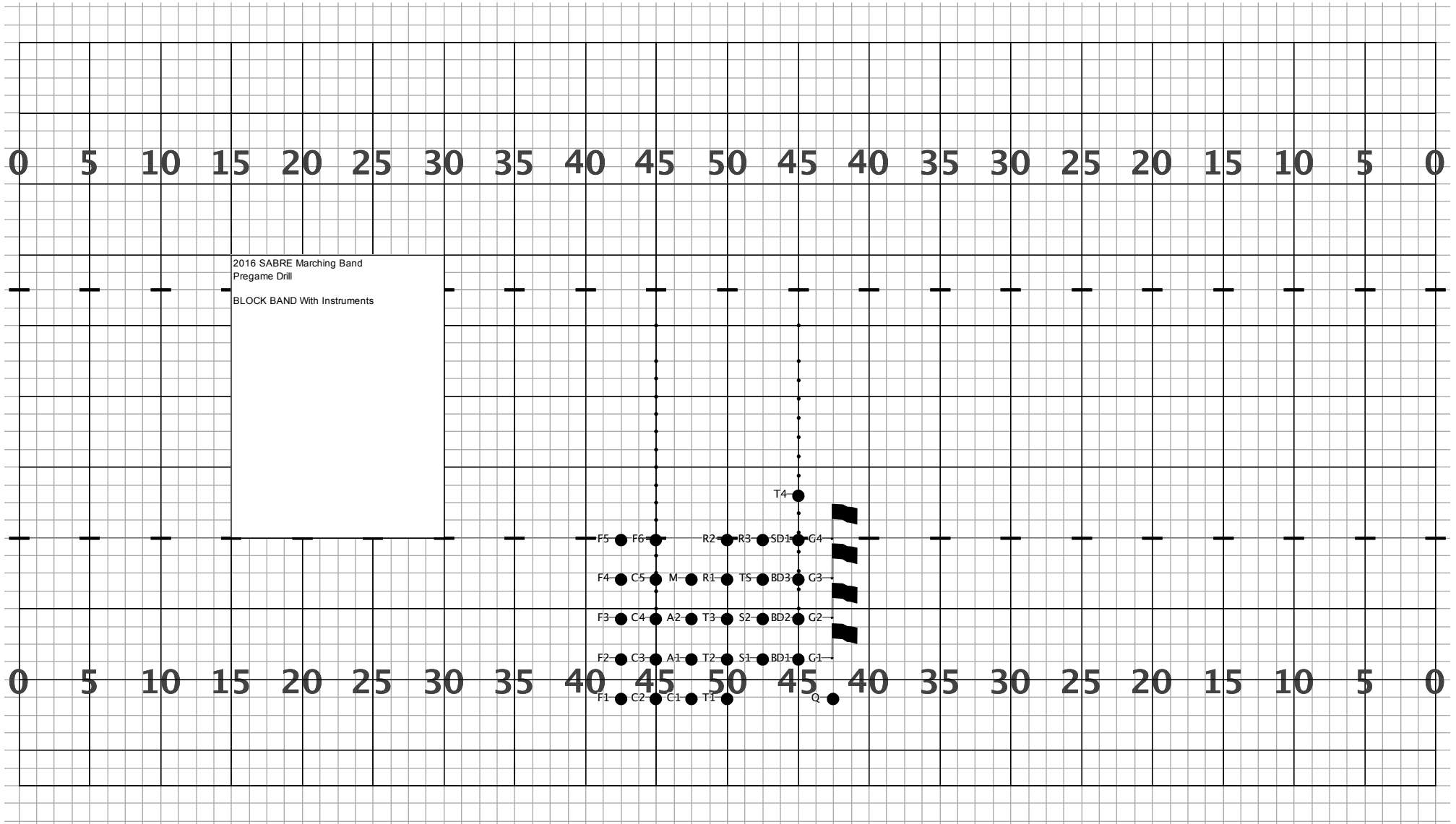
Director Viewpoint



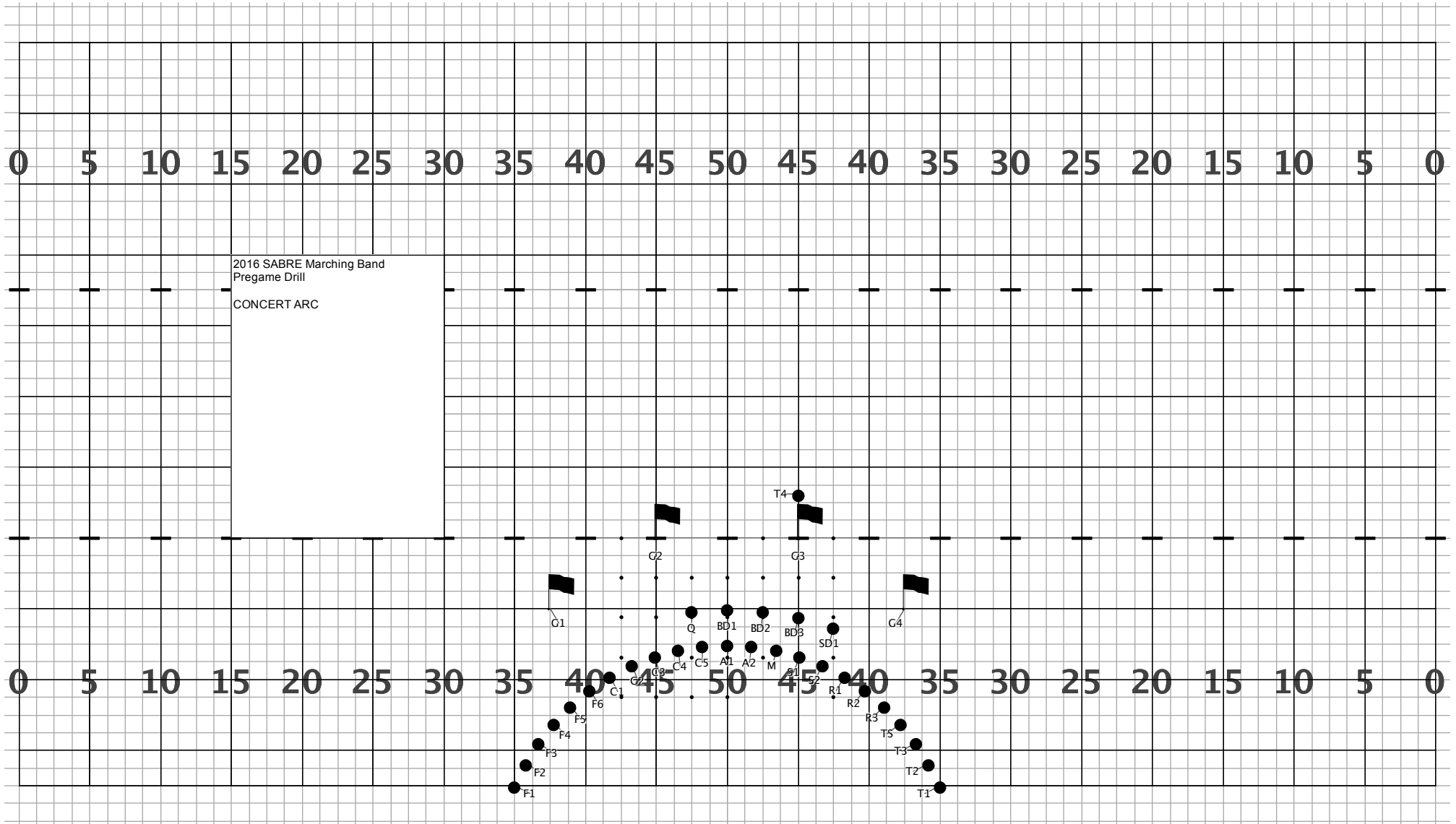
Director Viewpoint



Director Viewpoint



Director Viewpoint



Director Viewpoint